

When placing these in the field it is a good idea to mix the two types of



tubes so you cover all potential species in the area. Also by placing tubes on large trees you can also attract

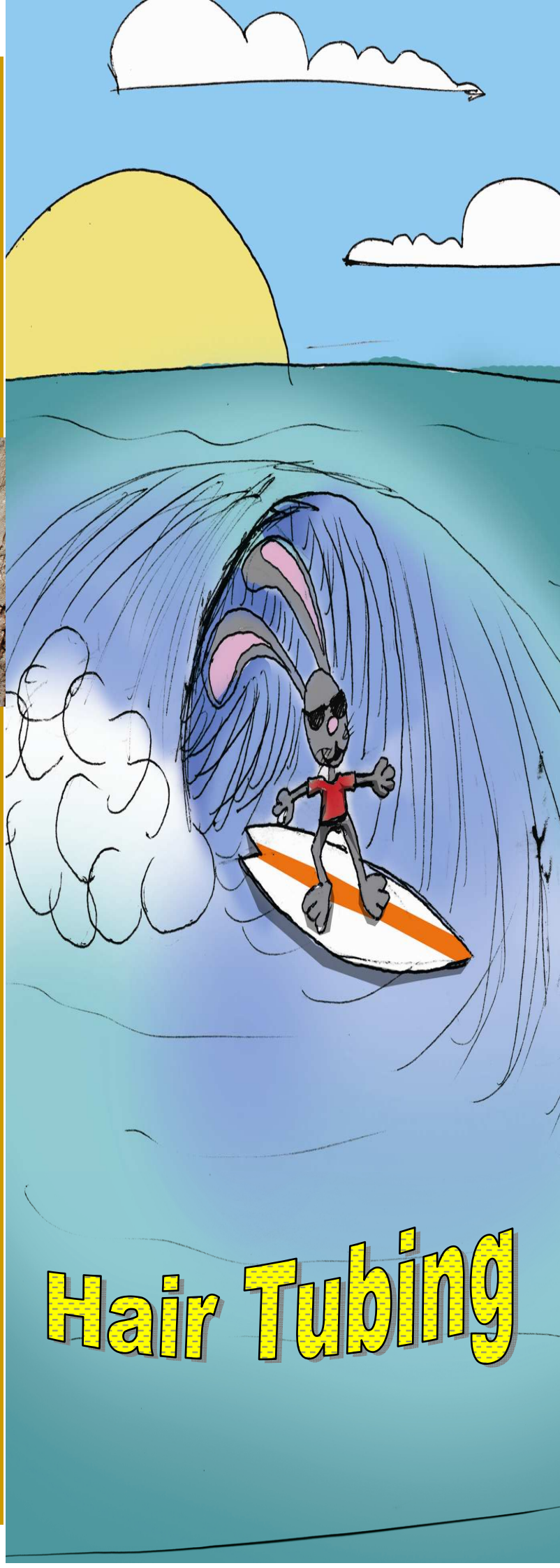
some of the small gliders. This is done by using a 100mm nail instead of a peg. Make sure this is not



driven home so it is easily removed. Make sure you record the location and number the each tube. Beware ants often are attracted to these tubes. When retrieving any samples they should be placed in oven bags as it makes it a lot to handle.

## The Brew

- Peanut Butter
- Honey
- Rolled Oats
- Mix it all together, place in smaller tube
- For antclines and other meat eating mammals you can use small bits of salami



## Hair Tubing



Hair tubing is a great way to get an indication of the wildlife in your area and very simple to do. All you need is some 40 mm PVC pipe some electrician's conduit and a small tent peg. The



idea is the mammals put their nose in the end of the pipe trying to get to the bait, in doing so they leave their hairs on the double sided tape that is on the end of the tube. These hairs are then sent off to be analysed thus enabling

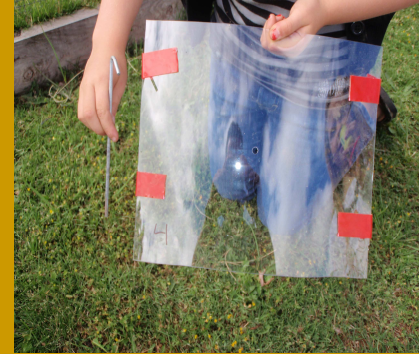
You to identify the species.

***First cut the PVC pipe in lengths of approx 150mm, drill a 7mm hole through the middle of the tube cut the conduit into 50mm lengths also drill a hole in the middle. Place 3 pieces of double sided tape on either end of the pipe. Fill the conduit with the bait, place the conduit in the centre of the pipe then push the peg through the drilled holes and into the ground.***



Another method of making tubes is with the use of thin Prepex. This is more suitable for larger mammals such as bandicoots which would struggle to get the tip of their nose in the small pipes.

You will need to cut the Prepex approx 25 cm x 30cm drill a 7mm hole in the middle. Then using stiff wire make a loop pushing both ends of the wire into the ground. Make sure you have several pieces of double sided tape either end of the tunnel you have created. Now you place the baited piece of conduit into



the centre of the tunnel and push the peg through through the hole in both the Prepex and the conduit. Make sure the top of the peg sits over the wire to hold it all place. It is only while you are placing the tubes into position that you take off the backing of the tape.

